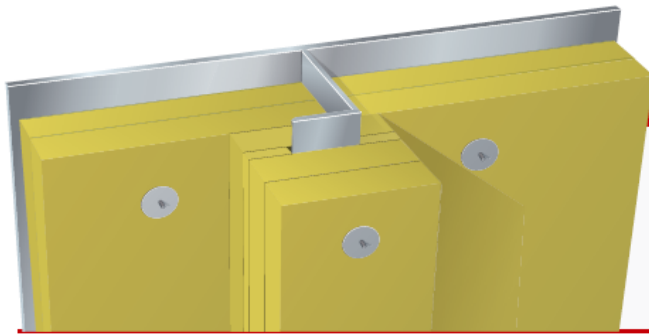


A-60 Aluminium Bulkhead restricted



MED B-4190

Product: Rockwool Marine Firebatts 130
Density: 130 kg/m³
Thickness: Plate 2x30 mm insulation
 Stiffener 2x30 mm insulation

Construction:

- Plate between stiffeners insulated with two layers of 30 mm Rockwool Marine Firebatts 130.
- Stiffeners insulated with two layers of min. 30 mm Rockwool Marine Firebatts 130.
- Standard alu plate min. 6 mm (± 0.5 mm) thick.
- Stiffeners 9 mm alu.
- $\varnothing 3$ mm alu tipped stainless steel pins fixed with approx 300 mm distance.
- Insulation secured with stainless steel washers of $\varnothing 38$ mm.

Application notes:

- Restricted application (fire against insulated side)
- All the connections must be tight, no air gaps.
- Gap under the stiffener must be filled out completely.
- Joints must be staggered, 150 mm overlap is recommended
- The pins should exceed the insulation by approx 10 mm.

- Insulation can be placed on either side of the alu plate

Advantages:



Safe solution



Optimal sound properties



Easy handling

Surfaces:

- Reinforced aluminium foil
- Glass cloth

Sound:

- Weighted sound absorption
 Marine Firebatts 130, 2x30 mm $\alpha_w=0.90$

